

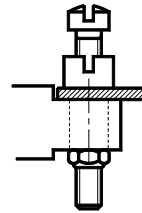
Basic socket series designation for :
Series WN460

Meets the requirements of:
MIL-DTL-12883

SOLDER CUP FOR 20AWG WIRE SIZE

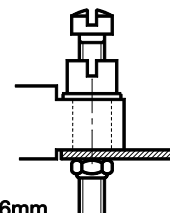
BOTTOM MOUNTING
MONTAGE SOUS STRUCTURE

HRCC-1JV2

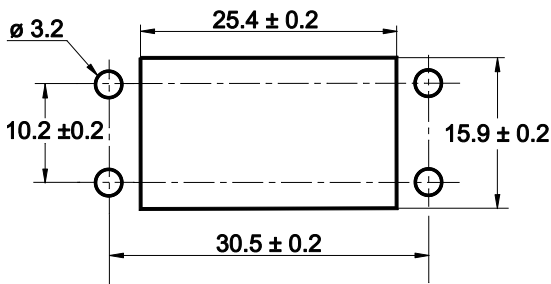


TOP MOUNTING
MONTAGE SUR STRUCTURE

HRCC-2JV2



PANEL THICKNESS : 1.6mm



GENERAL CHARACTERISTICS CARACTERISTIQUES GENERALES

Dimensions in mm
Tolerances, unless otherwise specified, ± 0.12 mm

Supplied with mounting hardware / Fourni avec visserie	
Temperature range / Température d'utilisation	-65° C to +125° C.
Weight / Masse	66g max.
Dielectric Strength at sea level / Rigidité diélectrique au niveau de la mer	1500 Vrms / 50 Hz Minimum
Gold plated contact per MIL-G-45204 / Contact broche dorées selon MIL-G-45204	
Diallyl phthalate, glass-fiber filled per MIL-M-14	

LEACH INTERNATIONAL EUROPE S.A.S.

Tel: +33 3 87 97 98 97

Fax: +33 3 87 97 98 86

LEACH INTERNATIONAL ASIA PACIFIC

Tel: +852 2 191 3830

Fax: +852 2 389 5803

The technical information provided by Leach International Europe is to be used as a guide only, and is not meant for publication or as documentation for altering any existing specification. Dimensions are in millimeters unless otherwise specified. Rev. 06/2019.