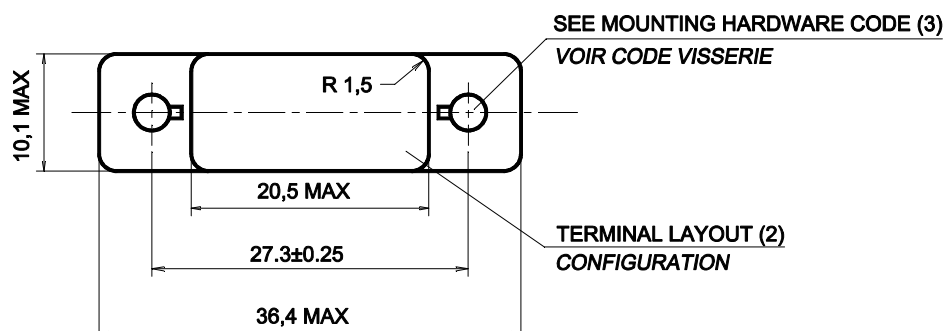


Basic socket series designation for:
Series M210 (DC coil)



GENERAL CHARACTERISTICS CARACTERISTIQUES GENERALES

Crimp tool <i>Pince à sertir</i>	M 22520/7-01 with turret M 22520/7-12
Insertion and extraction tool <i>Outil d'insertion et d'extraction</i>	MS 27534-20 or M 81969/16-01
Weight <i>Poids</i>	25g max.
Temperature range <i>Température d'utilisation</i>	-70° C to +125° C.
This socket is designed to the standards and requirements of MIL-S-12883 Contacts and hardware to be delivered disassembled in a plastic bag. Tolerances, unless otherwise specified, ±0.12mm. <i>Norme de référence MIL-S-12883, contacts et visserie livrés séparément dans un sachet plastique. Tolérances générales ±0,12mm.</i>	

AMERICAS.

Tel: +1 714-736-7599
<http://www.esterline.com/powersystems>

EUROPE.

Tel: +33 3 87 97 31 01
Fax: +33 3 87 97 96 86

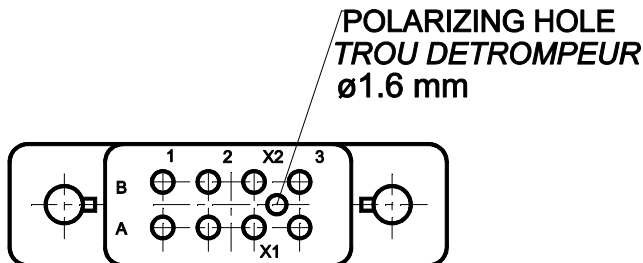
ASIA

Tel: +852 2 191 3830
Fax: +852 2 389 5803

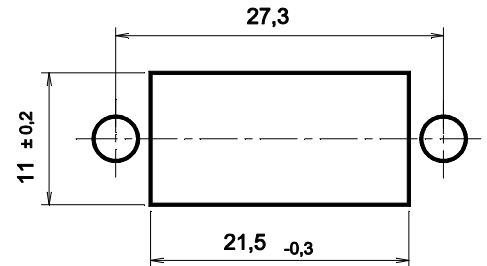
TERMINAL LAYOUT TYPE DE SORTIE

Dimensions in mm
Tolerances, unless otherwise specified, $\pm 0.25\text{mm}$

CODE A SERIES S210



MOUNTING CODE LAYOUT DECOUPE DE LA STRUCTURE



MOUNTING HARDWARE TYPE DE VISSERIE

<p>CODE 0 : WITHOUT HARDWARE CODE 0 : SANS VISSERIE</p>		<p>CODE 1 : 14 - 464 - 01 UNDER PANEL MOUNTING METRIC HARDWARE VISSERIE METRIQUE AMOVIBLE MONTAGE SOUS STRUCTURE</p> <p>$\varnothing : 3.6\text{ mm}$ APPLICABLE TORQUE COUPLE DE SERRAGE 0.45 Nm $\pm 0.1\text{ m}$</p>		<p>CODE 2 : 14 - 464 - 02 ABOVE PANEL MOUNTING METRIC HARDWARE VISSERIE METRIQUE AMOVIBLE MONTAGE SUR STRUCTURE</p> <p>$\varnothing : 3.6\text{ mm}$ APPLICABLE TORQUE COUPLE DE SERRAGE 0.45 Nm $\pm 0.1\text{ m}$</p>		<p>CODE 3 : 14 - 464 - 03</p> <p>BOTTOM MOUNT MONTAGE SOUS STRUCTURE</p> <p>$\varnothing : 4.4\text{ mm}$</p> <p>TOP MOUNT MONTAGE SOUS STRUCTURE</p> <p>$\varnothing : 3.2\text{ mm}$</p> <p>APPLICABLE TORQUE COUPLE DE SERRAGE STUD 2,8:0,45 Nm - STUD 4,2:1,1 Nm</p>	
<p>CODE 4 : 14 - 464 - 04</p> <p>FIXED STUDS, HARDWARE PER MIL 12883/45 VISSERIE U.N.C AMOVIBLE SELON M12883/45</p> <p>BOTTOM MOUNT MONTAGE SOUS STRUCTURE</p> <p>$\varnothing : 4.4\text{ mm}$</p> <p>TOP MOUNT MONTAGE SOUS STRUCTURE</p> <p>$\varnothing : 3.2\text{ mm}$</p> <p>APPLICABLE TORQUE COUPLE DE SERRAGE GOUJON 2,8:0,45 Nm - GOUJON 4,2:1,7 Nm</p>		<p>CODE 5 : 14 - 464 - 05</p> <p>UNDER PANEL MOUNTING METRIC HARDWARE VISSERIE METRIQUE MOULEE MONTAGE SUR STRUCTURE</p> <p>$\varnothing : 3.6\text{ mm}$</p> <p>FOR RELAY MOUNTING STYLE "B" POUR RELAIS AVEC FIXATION "B" APPLICABLE TORQUE 0.45 Nm COUPLE DE SERRAGE 0.45 Nm</p>		<p>CODE 6 : 14 - 464 - 06</p> <p>UNDER PANEL MOUNTING METRIC HARDWARE VISSERIE METRIQUE MOULEE MONTAGE SUR STRUCTURE</p> <p>$\varnothing : 3.6\text{ mm}$</p> <p>FOR RELAY MOUNTING STYLE "C" POUR RELAIS AVEC FIXATION "C" APPLICABLE TORQUE 0.45 Nm COUPLE DE SERRAGE 0.45 Nm</p>			

WIRE INSULATION DIAMETER FOR SEAL TO GROMMET
 JOINT D'ETANCHEITE

CODE A
Ø 0,80 to 1,85 mm. External wire diameter <i>Diamètre du fil externe</i>

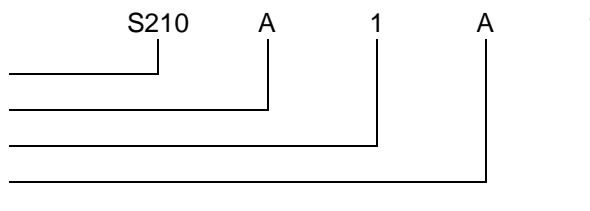
CONTACT SIZE AND STYLE
 TAILLE ET STYLE DE CONTACTS

CODE 0	CODE 1	CODE 4
Without contacts <i>Contacts non fournis</i>	LEACH reference : 14 421 00 Crimp end to accomodate: AWG 20-22-24 Contact mating end: AWG: 20	LEACH reference : 31 164 00 Crimp end to accomodate: AWG 20-22-24 Contact mating end: AWG: 20

SOCKET NUMBERING SYSTEM
 SYSTEME DE REFERENCES

Basic series designation | Référence de base

1. Terminal layout | Type de sorties
2. Mounting hardware | Type de visserie
3. Grommet to seal on wire insulation | Joint d'étanchéité
4. Contact size and style | Taille et style de contact



Exemple : S210-A1A1

NOTES
 REMARQUES

1. Qualification and quality levels : Contact the factory
Niveaux de qualification et de qualité : Nous consulter.