



Industrial 8-port Unmanaged Gigabit Ethernet Switch

■ ■ EHG2308
RoHS compliant

Technology

- 10/100/1000BaseT(X) (RJ45)
- Broadcast storm protection
- Support IEEE 802.3/ 802.3u/ 802.3x
- 10/100/1000M Full/Half-Duplex, MDI/MDI-X auto-detection

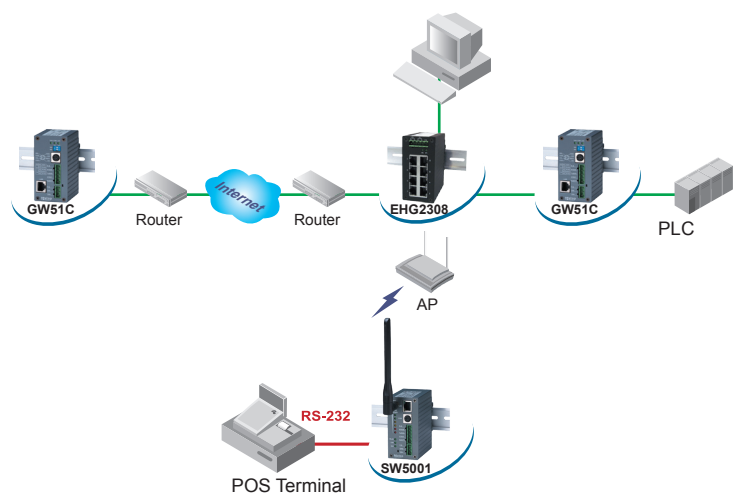
Reliability

- Redundant dual DC power inputs
- Operating temperature ranges from -10~70°C
- Rugged high-strength housing
- DIN-Rail or wall mounting ability

EHG2308 with 8 RJ-45 Gigabit ports for your industrial applications. It designs to work in the industrial environment, such as in hazardous locations that comply with CE, FCC, UL, IP50 and RoHS standards.

EHG2308 protects itself from receiving too many broadcast packets. During normal use, broadcast packets will be forwarded to all ports except the source port. However, it will discard broadcast or multicast packets if the number of those packets exceeds a threshold in a preset period of time. When the preset period expires (about 800ms), it will then resume receiving broadcast or multicast packets until the threshold is reached again.

EHG2308 provides two redundant power inputs that can be connected simultaneously to wide-range DC power sources. If one of the power inputs failure, the other live source acts as a backup to provide the EHG2308 power needs automatically.



Industrial 8-port Unmanaged Gigabit Ethernet Switch

EHG2308

Specifications

Technology

Standards	IEEE802.3, 802.3u, 802.3ab, 802.3x
Processing Type	Store and Forward
Flow Control	IEEE802.3x full duplex, back pressure flow control

Interface

RJ45 Ports	10/100/1000BaseT(X) auto negotiation speed Full/Half-duplex mode, and auto MDI/MDI-X connection
LED Indicators	Power, LAN(10/100/1000M)

Power Management

Input Voltage	9-48 VDC(0.45A max), Dual inputs
Consumption	4.05 Watts Max
Connector	Removable 5-pin Terminal Block for power input
Reverse Polarity Protection	Present

Physical Characteristics

Housing	IP50 protection, metal housing
Dimension(W x H x D)	45.2mm x 90mm x 78mm
Weight	255g

Environmental Limits

Operating Temperature	-10°C~70°C (14°F~158°F)
Storage Temperature	-40°C~85°C (-40°F~185°F)
Ambient Relative Humidity	5%~95% non-condensing

Regulatory Approvals

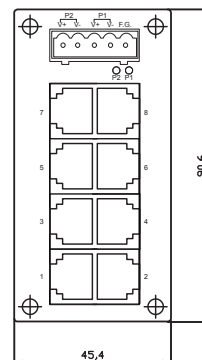
UL(Safety)	UL60950-1 2nd Ed. /CSA C22.2 No.60950-1-07 2nd Ed.
FCC(EMI)	FCC Part 15, Subpart B, Class A
CE(EMI)	European Standard EN 55022:2006/A1:2007 Class A. EN61000-3-2:2006, EN 61000-3-3:1995/A1:2001/A2:2005
CE(EMS)	EN55024:1998/A1:2001/A2:2003(IEC 61000-4-2:1995/A2:2000) IEC61000-4-3:2002, IEC 61000-4-4:2004 IEC 61000-4-5:1995/A1:2000, IEC 61000-4-6:1996/A1:2000 IEC 61000-4-8 :1993/A1:2000, IEC 61000-4-11:1994/A :2000
Shock	IEC 60068-2-27
Drop	IEC 60068-2-32(ISTA Test Procedure 2A)
Vibration	IEC 60068-2-64
RoHS	Lead(Pb) Free
MTBF	472359.98 hrs(25°C) / 53.92 years(25°C)
IP Protection	IP50 IEC/EN60529
Warranty	5 years

Optional Accessories

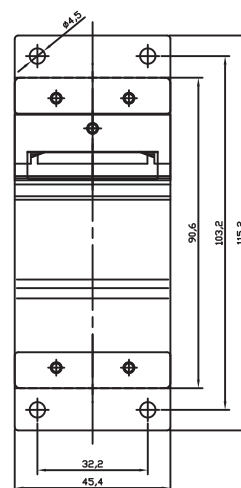
AD17-24C (US): AC100V~240V/DC24V for terminal block, US adapter
AD17-24D (EU): AC100V~240V/DC24V for terminal block, EU adapter
US315-12(US/EU) : AC100~240V/DC12V ; 5.08mm pitch terminal block
DIN-Rail mount, Wall mount

Ordering Information

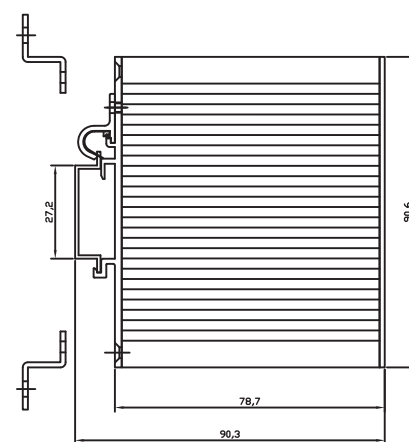
Model Name	Port Interface	100BaseFX	
		Multi Mode ST Connector	Single Mode SC Connector
Extended Temperature (-10°C ~ 70°C)	10/100/1000BaseT(X)		
EHG2308	8	----	----



Front-panel front view



Backboard rear view



(Mount kit)

Housing side view

Atop Technologies, Inc.

TEL : +886-3-5508137
 FAX : +886-3-5508131
 sales@atop.com.tw
 http://www.atop.com.tw

Design and specification are subjected to change without notice.

All product names referenced herein are registered trademarks of their respective companies.



CA_EHG2308_E : v2-110621

Distributed by:



www.scnordic.com



»» **Stockholm HQ**
Sensor Control Nordic AB
Truckvägen 16B
194 52 Upplands Väsby
Phone number: +46 8-668 21 00

Malmö
Sensor Control Nordic Syd
Rönneviksgatan 13
213 74 Malmö
Phone number: +46 40 -688 02 00

Umeå
Sensor Control Nordic Norr
Umestans Företagspark
903 47 Umeå
Phone number: +46 90-969 71

info@scn.se
www.scn.se

»» **Helsinki**
Sensor Control Nordic AB
Teknobulevardi 3-5
FI-01530 Vantaa, FINLAND
Phone number: +358 20
7348600

info@scnnordic.fi
www.scnnordic.fi

Tallinn
Sensor Control Nordic AB
Narva mnt 5
10117 Tallinn, ESTONIA
Phone number: +372
6514550

info@scn.ee
www.scn.ee

Connect with us on social media!

