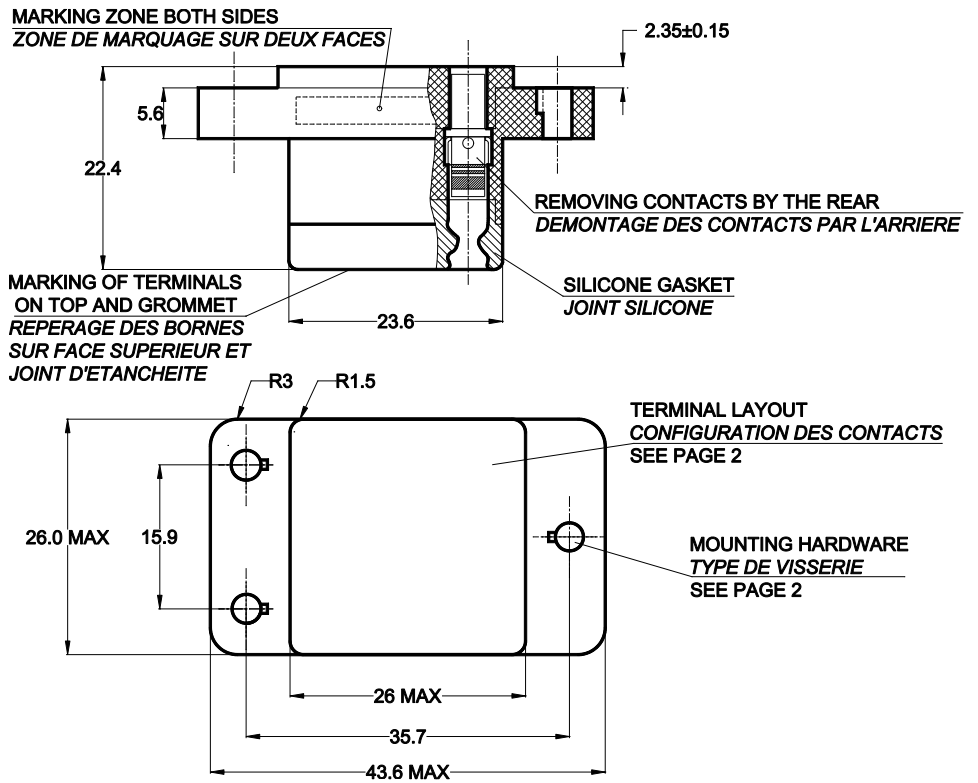
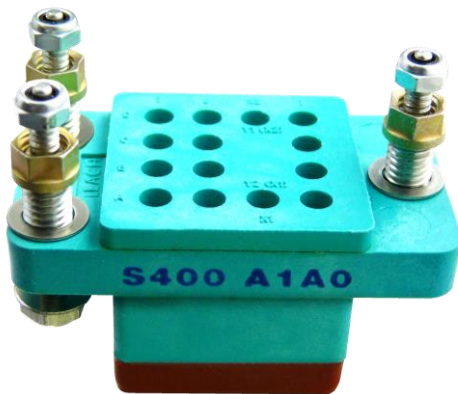


**S400,
S401,
S402**

**RELAY SOCKET CRIMP CONTACTS, 10 AMP
SOCLE A SERTIR POUR RELAIS, 10 A**

LEACH
INTERNATIONAL
EUROPE



Applicable relays and sensors:

S400 for series M400 (DC Coil),
S401 for M401 (AC Coil),
S402 for M402 (DC Coil-latch),
S400, S402 for FLS402, T412,
S400, S402 for T441, VS400, CS400

**GENERAL CHARACTERISTICS
CARACTERISTIQUES GENERALES**

Tooling #16 <i>Outillage #16</i>	Crimp tool <i>Pince à sertir</i>	M22520/1-01 with turret M22520/1-02 (Blue)
	Insertion and extraction tool <i>Outil d'insertion et d'extraction</i>	M81969/14-03
Weight <i>Poids</i>		35g max
Temperature range <i>Température d'utilisation</i>		-70° C to +125° C
In accordance to <i>En accord selon</i>		MIL-DTL-12883/40
Contacts and hardware delivered in a separate plastic bag <i>Contacts et visserie livrés séparément dans un sachet plastique</i>		
Gasket sealed socket, crimp contacts <i>Socle étanche par joint silicone, contacts à sertir</i>		

LEACH INTERNATIONAL EUROPE S.A.S.

Tel: +33 3 87 97 98 97

Fax: +33 3 87 97 96 86

LEACH INTERNATIONAL ASIA PACIFIC

Tel: +852 2 191 3830

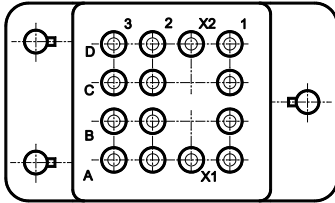
Fax: +852 2 389 5803

The technical information provided by Leach International Europe is to be used as a guide only, and is not meant for publication or as documentation for altering any existing specification. Dimensions are in millimeters unless otherwise specified. Rev. 06/2019.

**TERMINAL LAYOUT
TYPE DE SORTIE**

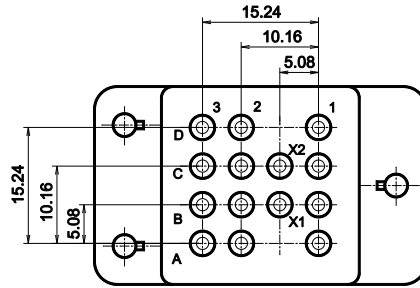
Dimensions in mm
Tolerances, unless otherwise specified, $\pm 0.25\text{mm}$

**Series S400
Code A**



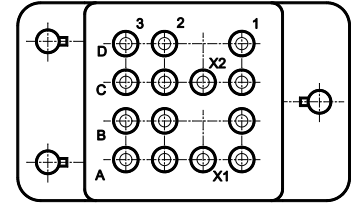
Applicable to M400 / T412

**Series S401
Code B**



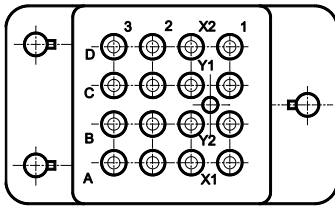
Applicable to CS400 / M401 Coil F and K

**Series S401
Code C**



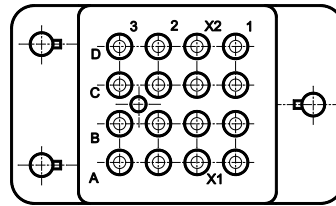
Applicable to M401 Coil E and J

**Series S402
Code D**



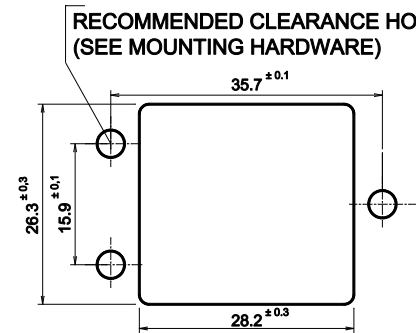
Applicable to M402 / FLS402 / VS400 / T441

**Series S402
Code E**



Applicable to FD400

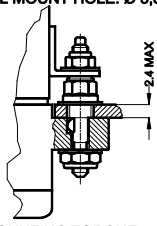
**MOUNTING HOLE LAYOUT
DECOUPE DE LA STRUCTURE**



**MOUNTING HARDWARE
TYPE DE VISSERIE**

CODE 1 : 05 284 12
LOOSE STUD
UNC HARDWARE

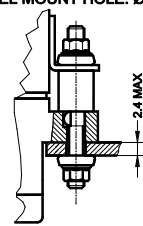
PANEL MOUNT HOLE: $\varnothing 5,3$



MOUNTING TORQUE
112-40: 0.45 Nm
190-32: 1.2 Nm

CODE 2 : 05 284 00
LOOSE STUD
METRIC HARDWARE

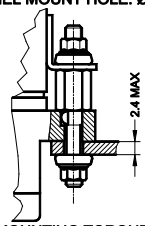
PANEL MOUNT HOLE: $\varnothing 3,5$



MOUNTING TORQUE
M3: 0.45 Nm

CODE 3 : 05 284 07
LOOSE STUD
METRIC HARDWARE

PANEL MOUNT HOLE: $\varnothing 3,5$



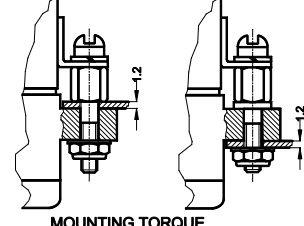
MOUNTING TORQUE
M3: 0.45 Nm

CODE 4
WITHOUT HARDWARE
HOLE DIAM 2.9 mm
FOR 112-40 SCREW

CODE 5
WITHOUT HARDWARE
HOLE DIAM 3.1 mm
FOR M3 SCREW

CODE 6 : 05 284 13
LOOSE STUD - UNC HARDWARE

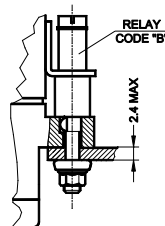
PANEL MOUNT HOLE: $\varnothing 3,5$



MOUNTING TORQUE
112-40: 0.45 Nm

CODE 7 : 05 284 15
LOOSE STUD METRIC HARDWARE

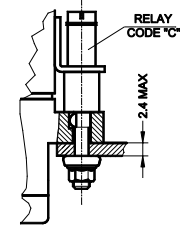
PANEL MOUNT HOLE: $\varnothing 3,5$



MOUNTING TORQUE
M3: 0.45 Nm

CODE 10 : 05 284 16
LOOSE STUD UNC HARDWARE

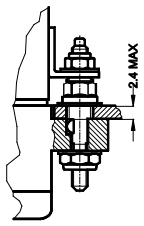
PANEL MOUNT HOLE: $\varnothing 3,5$



MOUNTING TORQUE
112-40: 0.45 Nm

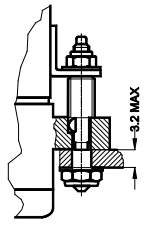
CODE 8 : 05 284 20
LOOSE STUD - UNC HARDWARE

PANEL MOUNT HOLE: $\varnothing 5,3$



MOUNTING TORQUE
112-40: 0.45 Nm
190-32: 1.2 Nm

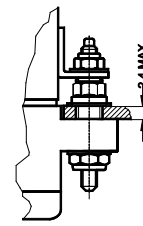
PANEL MOUNT HOLE: $\varnothing 3,5$



MOUNTING TORQUE
112-40: 0.45 Nm
190-32: 1.2 Nm

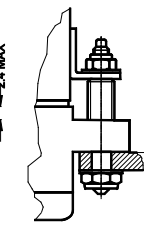
CODE 9 : 05 284 21
FIXED STUD - UNC HARDWARE

PANEL MOUNT HOLE: $\varnothing 5,3$



MOUNTING TORQUE
112-40: 0.45 Nm
190-32: 2.0 Nm

PANEL MOUNT HOLE: $\varnothing 3,5$



GROMMET TYPE

TYPE DE JOINT D'ETANCHEITE

Wire sealing: A silicone grommet is permanently bonded to the wire entry face of the socket so as to provide sealing capabilities for AWG size 16, 18 and 20 or 20, 22 and 24 wire as applicable.

Etanchéité du fil : Un joint silicone fait partie intégrante du socle et permet de garantir une étanchéité des fils de AWG 16, 18 et 20 ou 20, 22 et 24.

External wire diameter / Diamètre extérieur du Fil	CODE A	CODE B
	Recommended for contact Code 2 and 8	Recommended for contact Code 3 and 9
	Dimensions in mm	Dimensions in mm
Main contacts	1.2 to 2.4	0.8 to 1.6
X1-X2 Contacts	1.2 to 2.4	0.8 to 1.6
Y1-Y2 Contacts (S402)	1.2 to 2.4	0.8 to 1.6

CONTACT SIZE AND STYLE

TAILLE ET STYLE DE CONTACTS

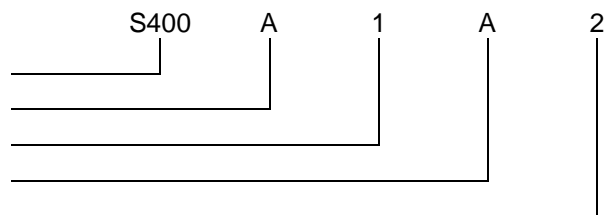
CODE 0	CODE 2	CODE 3	CODE 8	CODE 9
WITHOUT CONTACTS				
05 911 00	05 911 10	30 315 00	31 315 10	
	<p>MAIN CONTACTS CRIMP END TO ACCOMODATE WIRE # 16 - 18 - 20</p> <p>CONTACT MATING END # 16</p>	<p>MAIN CONTACTS CRIMP END TO ACCOMODATE WIRE # 20 - 22 - 24</p> <p>CONTACT MATING END # 16</p>	<p>MAIN CONTACTS (MIL-C-39029/92-533) CRIMP END TO ACCOMODATE WIRE # 16 - 18 - 20</p> <p>CONTACT MATING END # 16</p>	<p>MAIN CONTACTS (MIL-C-39029/92-534) CRIMP END TO ACCOMODATE WIRE # 20 - 22 - 24</p> <p>CONTACT MATING END # 16</p>

SOCKET NUMBERING SYSTEM

SYSTEME DE REFERENCES

Basic series designation | Référence de base

1. Terminal layout | Type de sorties
2. Mounting hardware | Type de visserie
3. Grommet type | Type de joint d'étanchéité
4. Contact size and style | Taille et style de contact



Exemple : S400-A1A2

**S400,
S401,
S402**

**RELAY SOCKET CRIMP CONTACTS, 10 AMP
SOCLE A SERTIR POUR RELAIS, 10 A**



**MS/LEACH CROSS PART NO.
CORRESPONDANCE MIL/LEACH**

	MS - Number	LEACH P/N	CONTACTS TYPE	HARDWARE
MIL-DTL-12883/40	13S	S400-A8A8	14 x M39029/92-533	Loose Stud
	14S	S401-B8A8	14 x M39029/92-533	Loose Stud
	17S	S400-A8B9	14 x M39029/92-534	Loose Stud
	18S	S402-D8A8	16 x M39029/92-533	Loose Stud
	19S	S400-A9A8	14 x M39029/92-533	Fixed Stud
	20S	S401-B9A8	14 x M39029/92-533	Fixed Stud
	23S	S400-A9B9	14 x M39029/92-534	Fixed Stud
	24S	S402-D9A8	16 x M39029/92-533	Fixed Stud

**NOTES
REMARQUES**

- 1. Qualification and quality levels : Contact the factory**
Niveaux de qualification et de qualité : Nous consulter.