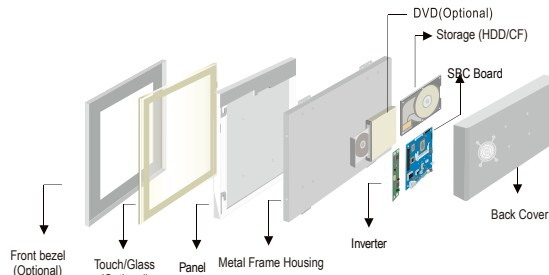


# R19IB7T-IPM1 19" Panel PC (Intel Celeron Bay Trial-M N2930 1.83GHz)

Mechanical Design

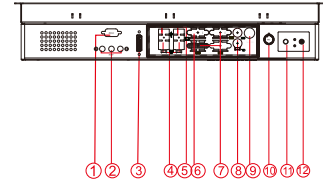


Ip65 (8 mm front bezel)



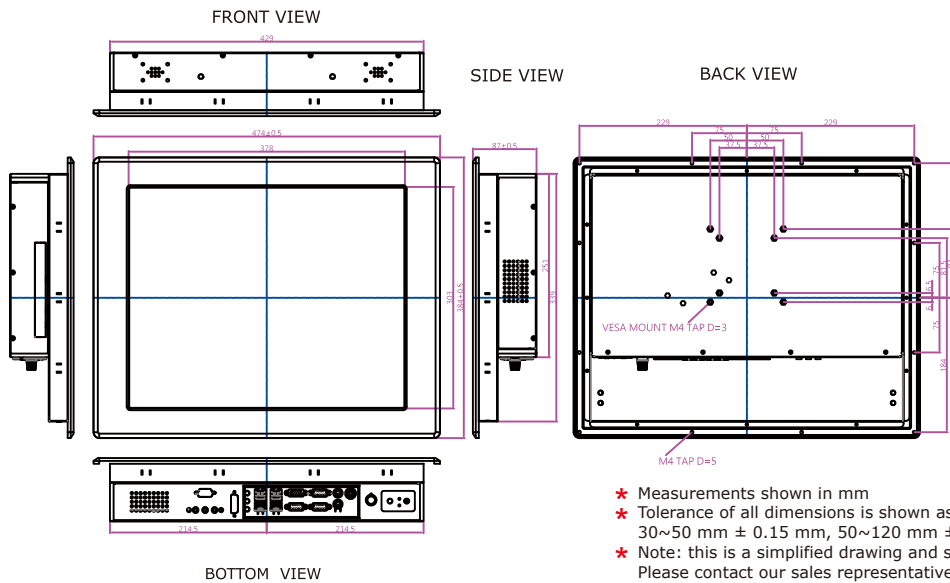
Mechanical design

Dimensions

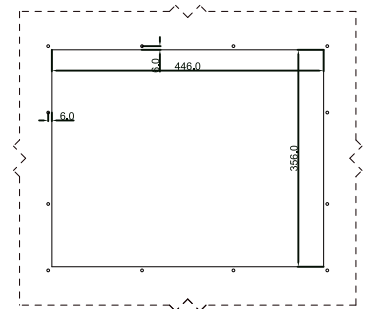


- |                            |                                |
|----------------------------|--------------------------------|
| 1. RS-232 Conn. (Optional) | 7. RS-232 Conn.                |
| 2. Audio                   | 8. PS/2                        |
| 3. DVI(Optional)           | 9. 12V DC-IN                   |
| 4. LAN                     | 10. Brightness Adjustment Knob |
| 5. USB(1 x 3.0, 3 x 2.0)   | 11. Power On Button            |
| 6. VGA                     | 12. Power Reset Button         |

Fully Integrated I/O



IP65 CUT OUT



- \* Measurements shown in mm
- \* Tolerance of all dimensions is shown as follow 0~30 mm ± 0.1 mm, 30~50 mm ± 0.15 mm, 50~120 mm ± 0.2 mm, above 120 mm ± 0.25 mm
- \* Note: this is a simplified drawing and some components are not marked in detail. Please contact our sales representative if you need further product information.

## Specifications

### System :

- CPU : Intel® Celeron® Bay Trial-M N2930 1.83GHz
- Memory Slot : SODIMM DDR3L1600/1333max.8G
- System Chipset : Intel® Atom SoC Integrated
- IDE/SATA : 1 x SATA II
- LAN : Intel® I210-AT GbE LAN x 2
- Audio Codec : Realtek ALC886 HD Audio Codec

### Input / Output :

- Serial Ports : 2 x RS232, 1 x RS232/422/485<sup>●</sup>
  - USB Ports : 1 x USB 3.0, 3 x USB 2.0
  - Keyboard / Mouse : 2 x PS/2
  - Ethernet : 2 x RJ45-10/100/1000 Mbps
  - VGA : 1 x VGA (female)
  - Audio : Line-out, Line-in, Mic in
- <sup>●</sup> Default setting:RS232

### Expansion Slot :

- 2 x Mini PCIe (1 for WiFi, 1 for 3G Module)
- 1 x eDP by 2x10 DF-13 connector

### Power Specifications :

- Power Input : 12V DC IN
- Power Consumption : 57W (typ.)(Max.backlight & high CPU load)

### Accessories :

- External Adapter : 110~240V Ac-in 12V DC-output Power Adapter

### Security Support :

- Trusted Platform Module (TPM 1.2)

### Panel Spec :

- Size/Type : 19" TFT
- Resolutions : 1280 x 1024
- Brightness : 250 cd/m<sup>2</sup>(typ.)
- Contrast Ratio : 1000 : 1(typ.)
- Viewing Angle : -85~85(H);-80~80(V)
- Max. Colors : 16.7M (8 bits/colors)

### Environment Considerations :

- Operating Temperature : 0 deg.C to 50 deg.C
- Operating Humidity : 30% to 90% (non condensing)

### OS BSP / Driver Support :

- Support Windows 10 IoT Enterprise / Windows embedded 8 / Windows embedded 7

### Order Options :

Mechanical : IP65 (8 mm bezel)	Storage : 2.5" HDD/ mSATA SSD
Touch : 5-Wires Resistive (Optional) AR Glass(Optional)	RAM : SODIMM DDR3L 1600/1333max.8G
	OS : Windows 10 IoT Enterprise / Windows 7 embedded / Windows 8 embedded (Optional)

(A customized housing is needed if you have demands of SAW/IR/IT/SC touch)